

# **CLEAN AIR DIALOGUE**

## **Transport sector**



Ján Horváth 24.4.2018

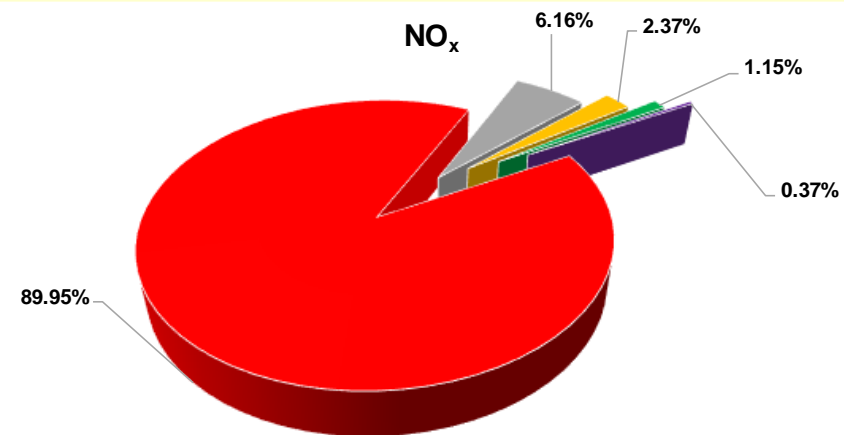
# CONTENTS

---

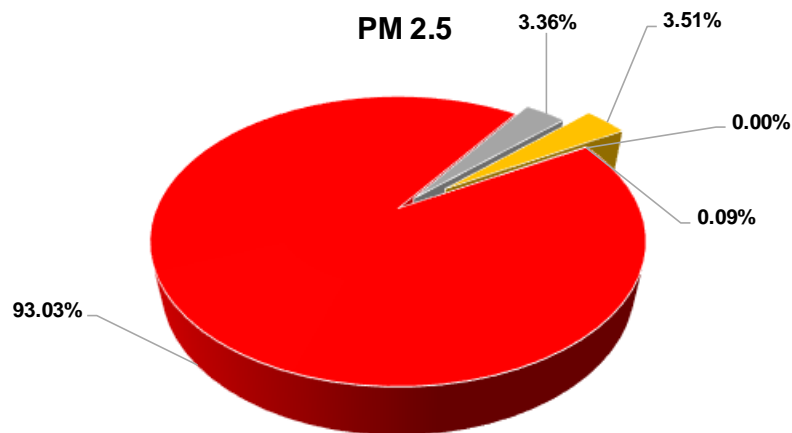
1. Share of emissions from each transport types in 2016
2. Vehicle fleet structure and parameters
3. NO<sub>x</sub> emissions in road transportation
4. PM 2.5 emissions in road transportation

# Share of emissions from each transport types in 2016

- Highest share of Nox emissions has road transportation (89.95 %) and railways (6.16 %)



■ Aviation (LTO) ■ Road transport ■ Railways ■ Navigation ■ Pipeline transport

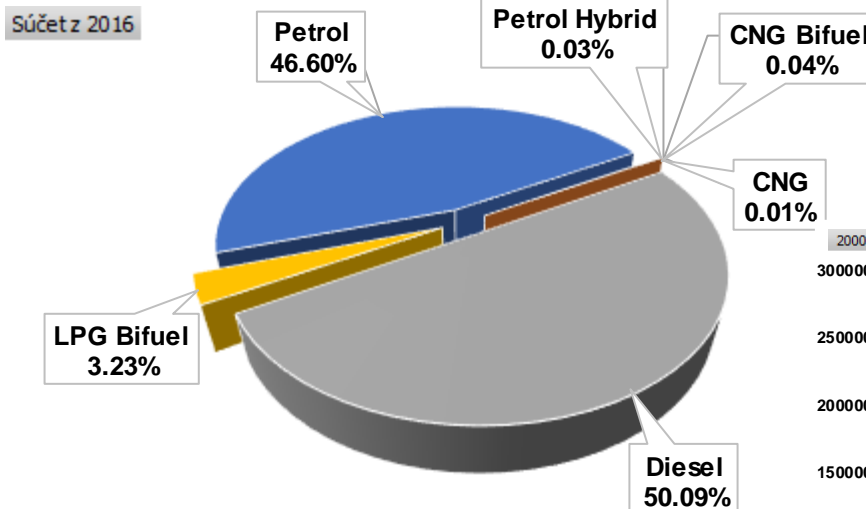


■ Aviation (LTO) ■ Road transport ■ Railways ■ Navigation ■ Pipeline transport

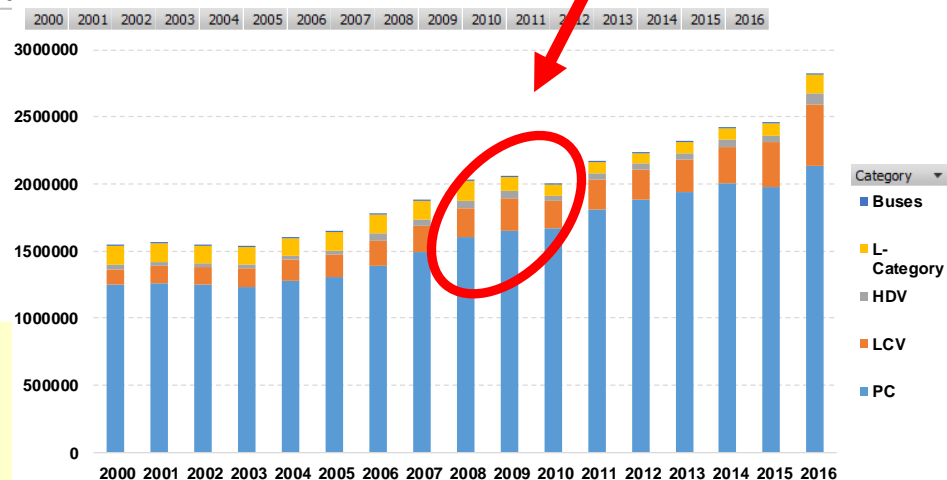
- Highest share of PM 2.5 emissions has road transportation (93.03 %), railways (3.36%) and navigation (3.51 %)

# Vehicle fleet structure and parameters

- Vehicles with diesel aggregate (DA) have share more than 50% of all vehicles in traffic in 2016
- Passenger cars with DA make up 32% of all vehicles
- HDV are only 2.88% of all vehicles (in 2000 6.59%)



scrap subsidy in 2009

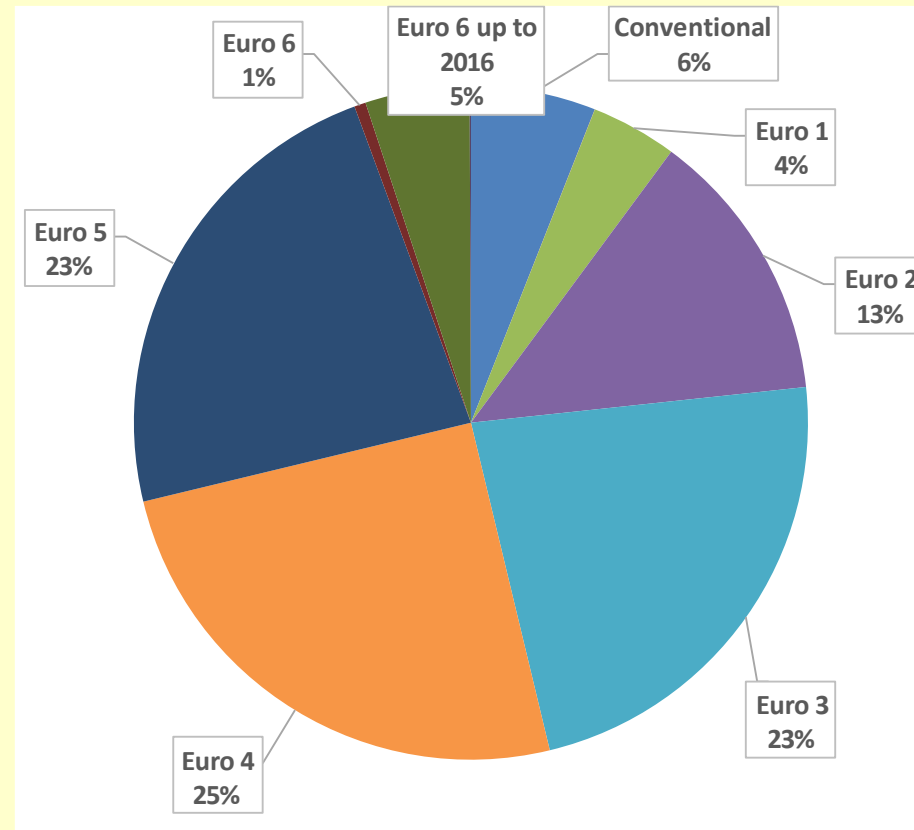


Hodnoty

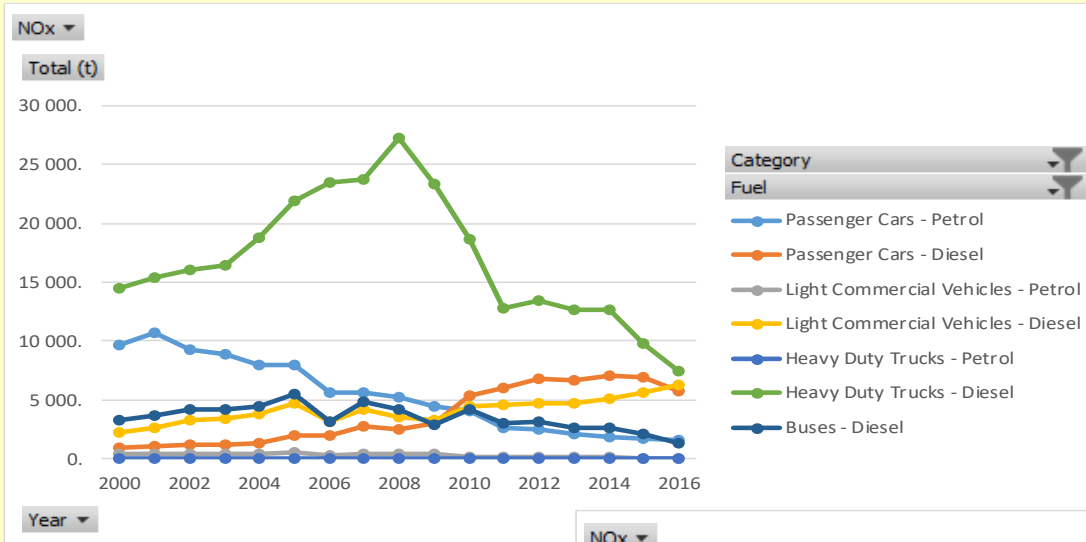
# Vehicle fleet structure and parameters

- Average age of diesel PC is 11.5 years, most of them is from period before and in start of „dieselgate“
- Average age of the slovak vehicle fleet is 13.2years

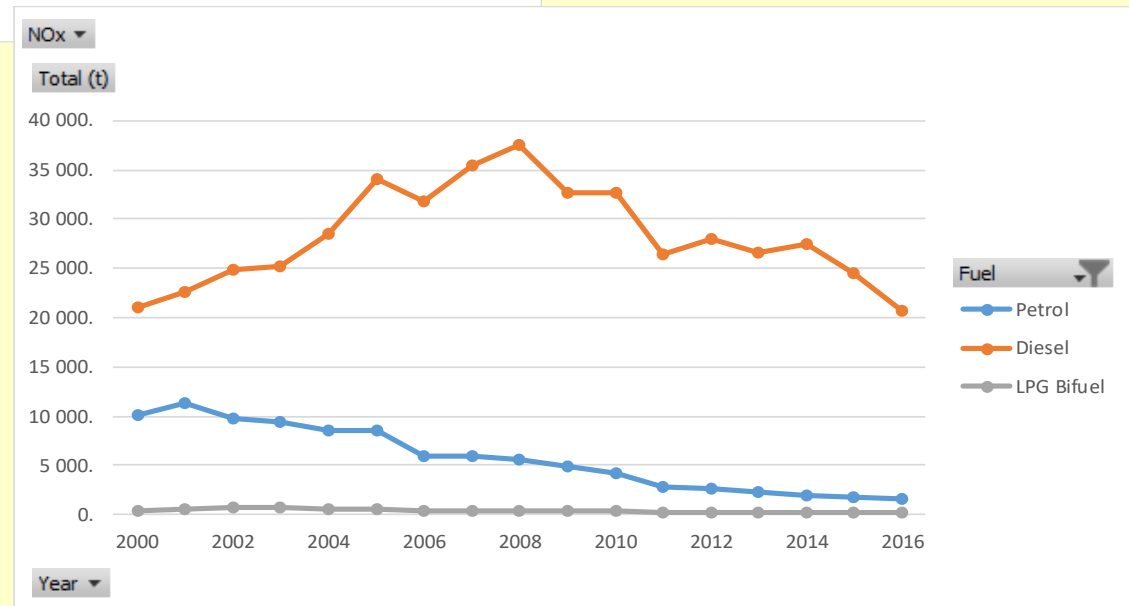
Slovakia	Age
Passenger Cars	13.3
LCV	13.4
Heavy Duty Trucks	13.9
Buses	12.0
L-Category	13.4



# NO<sub>x</sub> emissions in road transportation

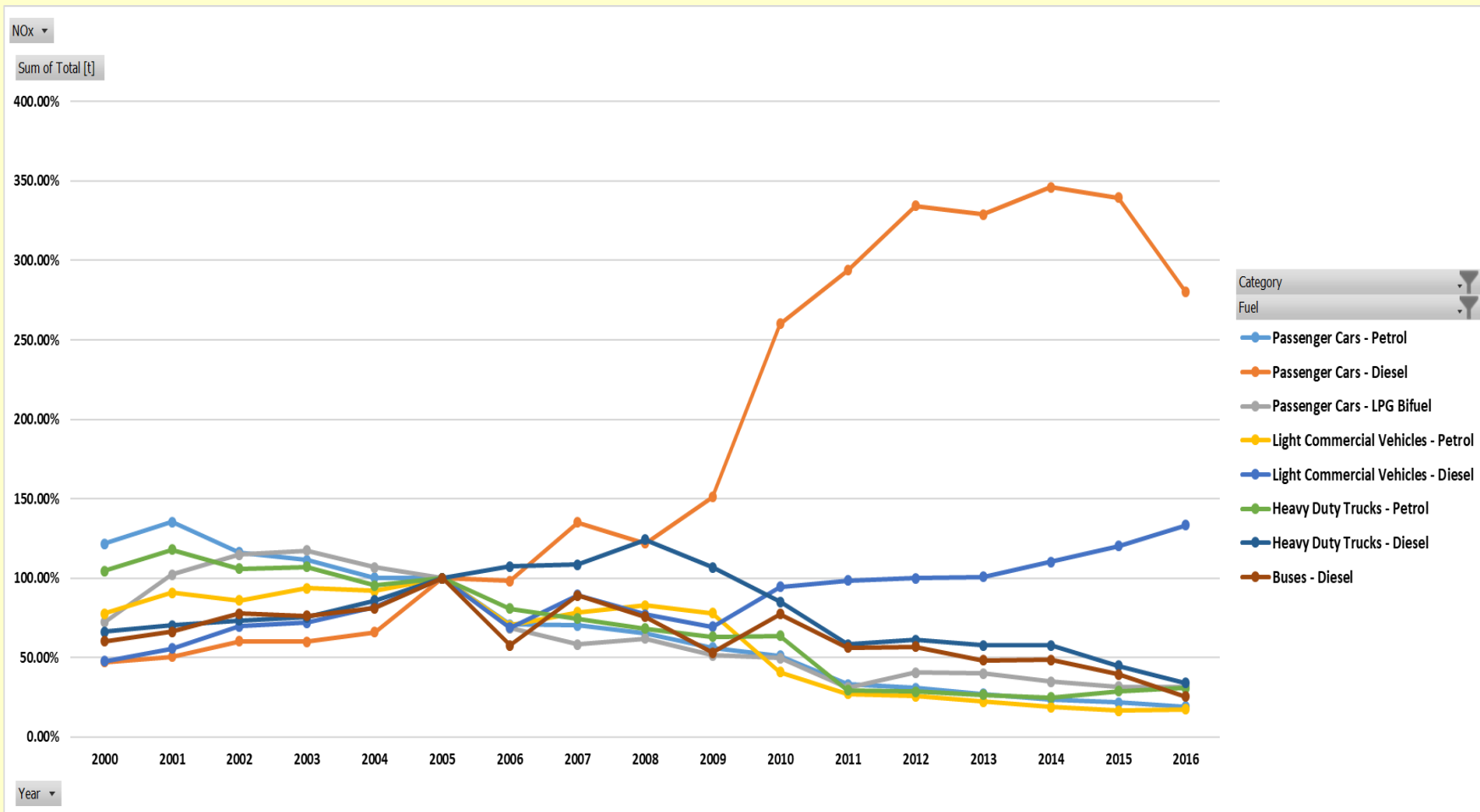


Trend in NO<sub>x</sub> emissions is declining in the recent years. Highest emissions are from HDV and rising from LCV.

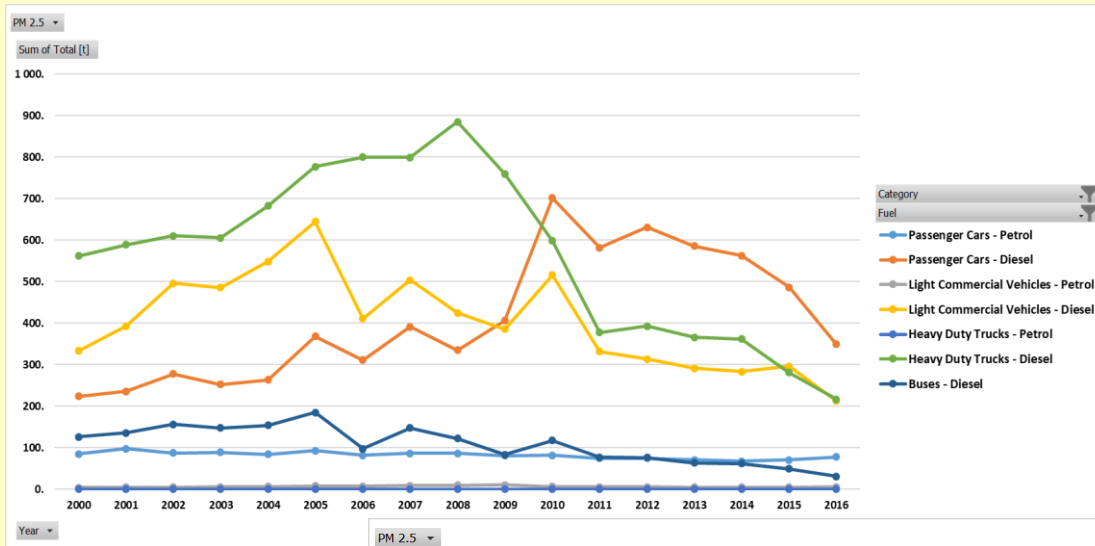


# NO<sub>x</sub> emissions in road transportation

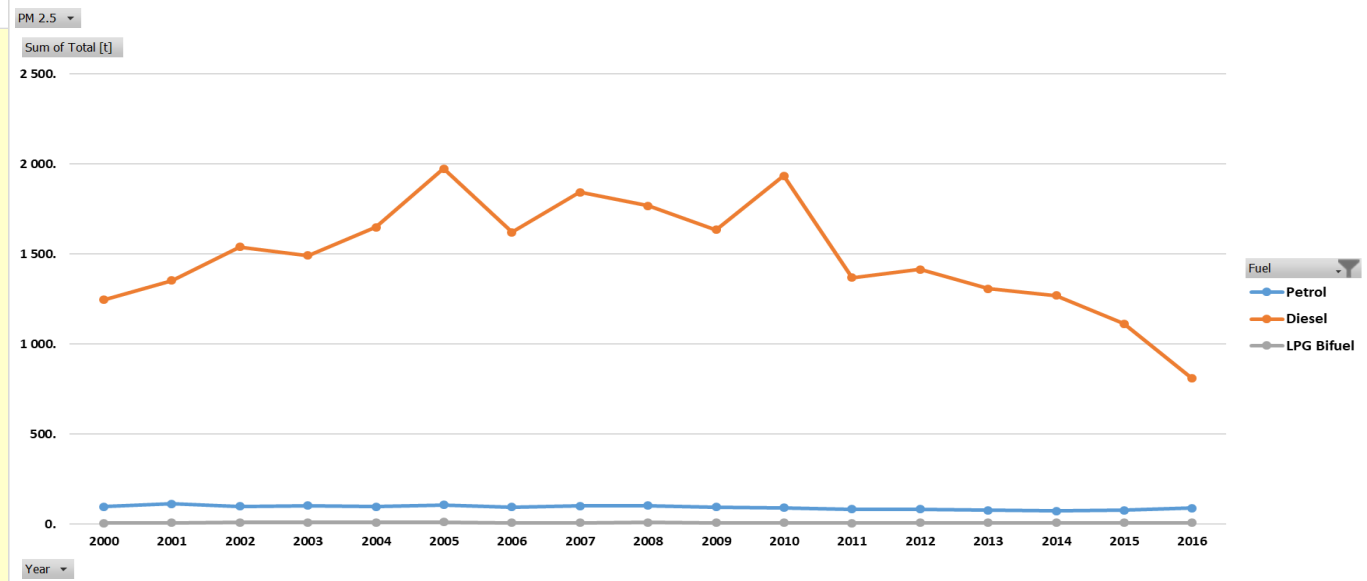
■ In 2016 NO<sub>x</sub> emissions are only 52 % of 2005 volume



# PM 2.5 emissions in road transportation



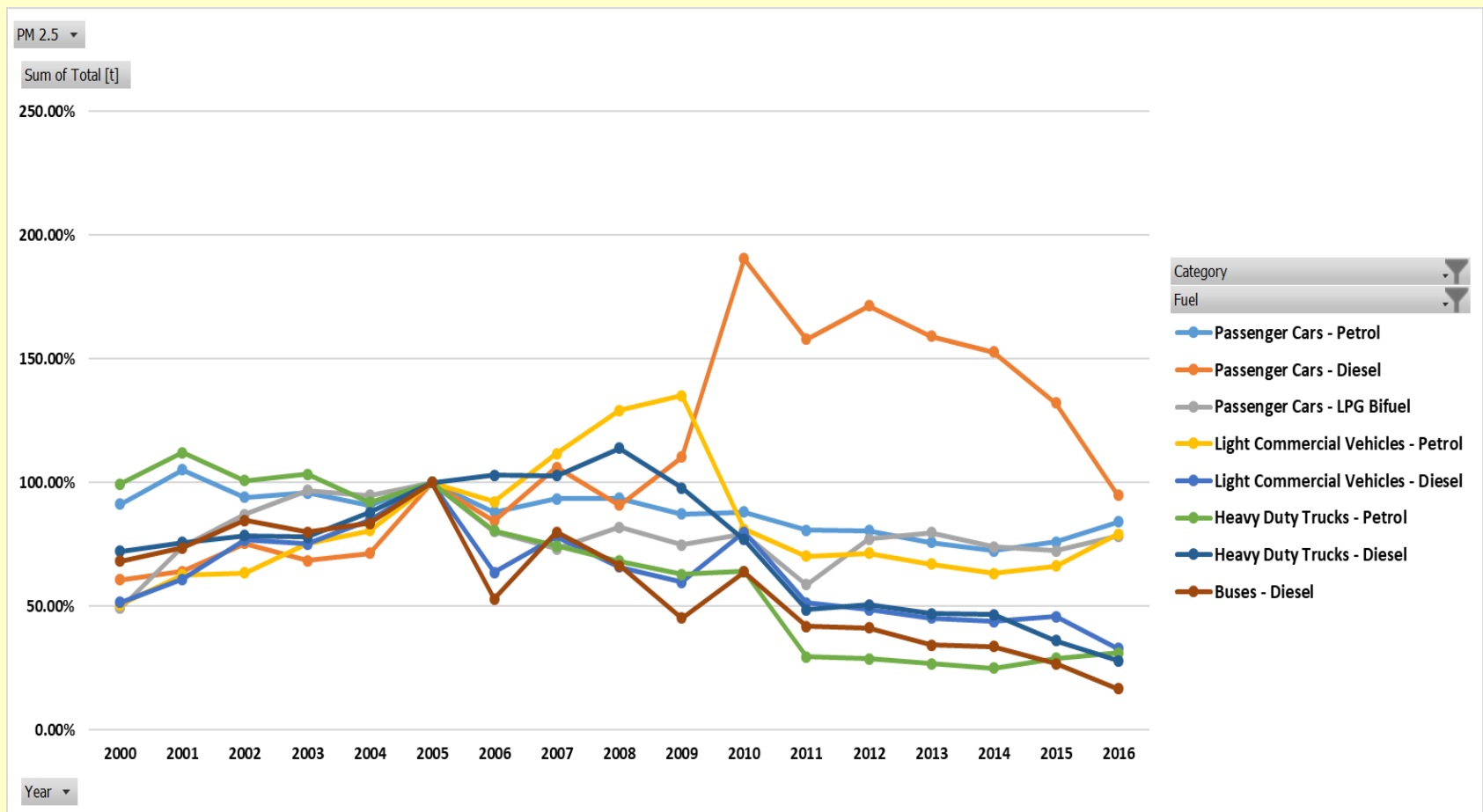
Trend in PM 2.5 emissions is declining in the recent years, thanks to new technology. Highest emissions are from PC, HDV and LCV.



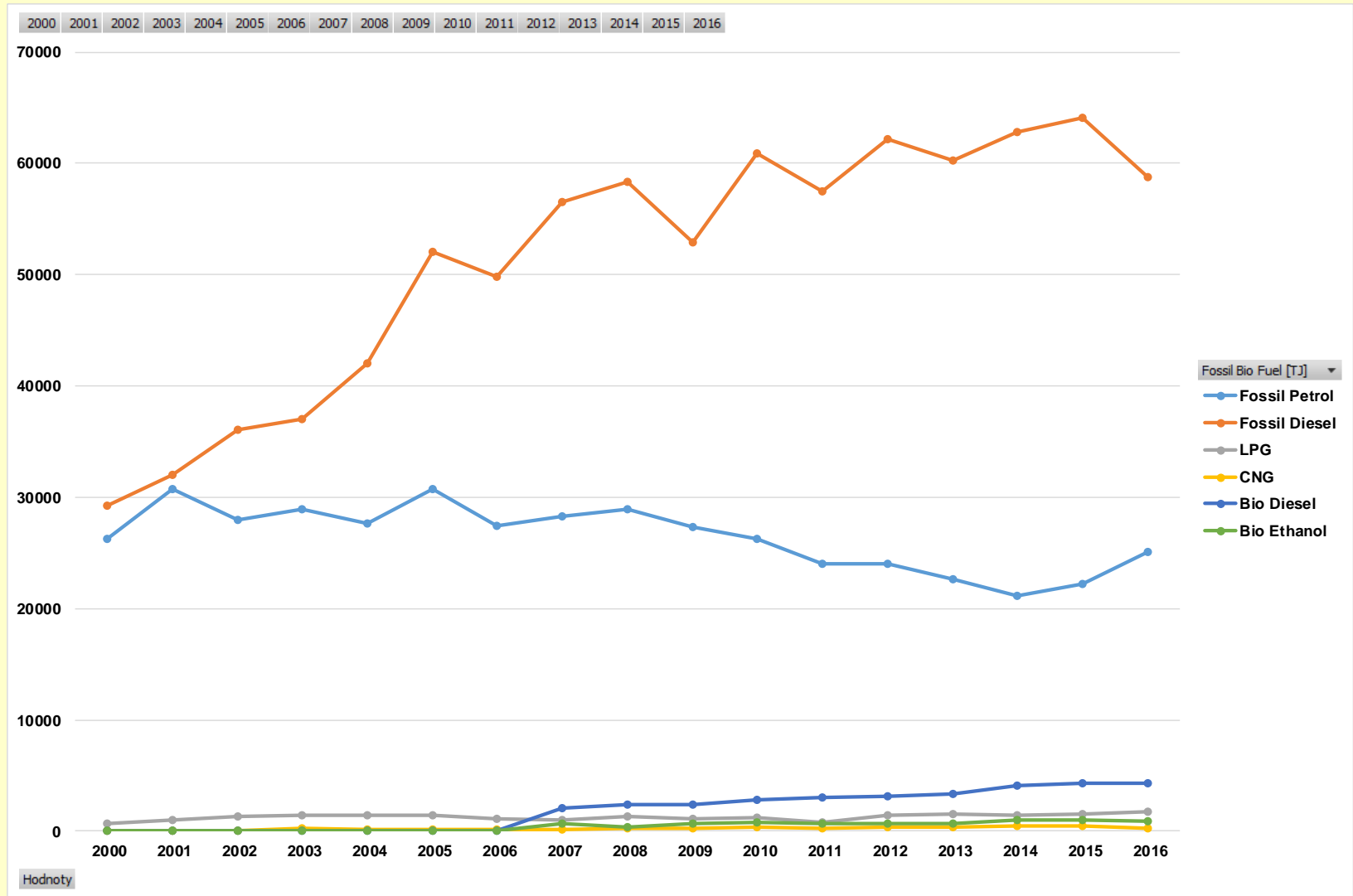


# PM 2.5 emissions in road transportation

- In 2016 PM 2.5 emissions are only 43 % of 2005 volume



# Fuel consumption



---

# Thank you!

Questions?